

LUCIANA

Musica di:
A.BUDRIESI

POLCA

STRUMENTI IN DO

Chords: Fa7, Sib, Fa7, Sib, Sol7, Dom, Sib, Fa7, Sib, Sib, Fa, Do7, Fa, Fa, Do7, Fa, Fa.

1. 2. 3. 1. 2.

1. 2.

1^ PARTE
POI SEGUE

LUCIANA PAG. 2 (Im Do)

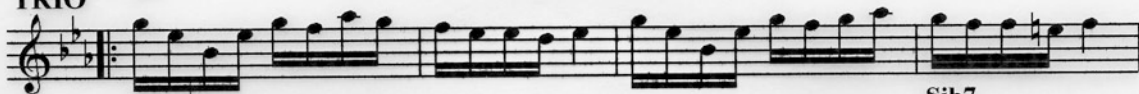
SEGUE

Bassi



TRIO

Sib7



Mib

Sib7



Mib



Do7

Fam



Mib

Sib7

Mib



Mib

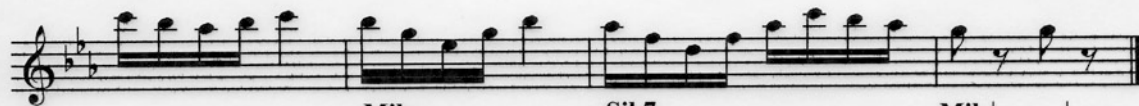
Sib7



Mib

Do7

Fam



Mib

Sib7

Mib

LUCIANA

Musica di:
A. BUDRIESI

CLARINETTO IN Sib

POLCA

Musical score for Clarinet in B-flat, Polca section. The score consists of 10 staves. The first staff begins with a treble clef, a 2/4 time signature, and a key signature of one sharp (F#). The music is a polka, characterized by a steady eighth-note rhythm. The first staff contains the initial melody. The second and third staves continue the melody with some variations. The fourth staff includes a first ending (1.) and a second ending (2.). The fifth staff changes the key signature to two sharps (D major). The sixth and seventh staves continue the melody. The eighth staff features a triplet of eighth notes. The ninth and tenth staves include first and second endings, and the section concludes with a double bar line and repeat dots.

1^ PARTE
POI SEGUE

SEGUE

TRIO

Musical score for Basses, Segue and Trio sections. The score consists of 4 staves. The first staff is labeled 'Bassi' and begins with a bass clef, a 2/4 time signature, and a key signature of one flat (B-flat major). The music is a polka. The second and third staves continue the melody. The fourth staff concludes the section with a double bar line and repeat dots.